

PORTFOLIO CONTENTS

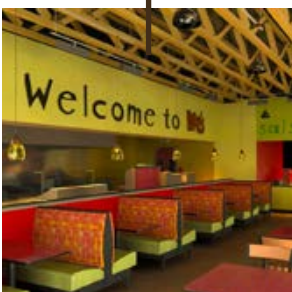
One Georgia Bank  
Atlanta, GA



Starbucks Coffee Company  
Stow, OH



Moe's Southwest Grill  
Columbia, SC



First Federal Savings & Loan  
Wilmington, NC



Jackson Hewitt Kiosk  
Various Locations



Renderings &  
Artwork



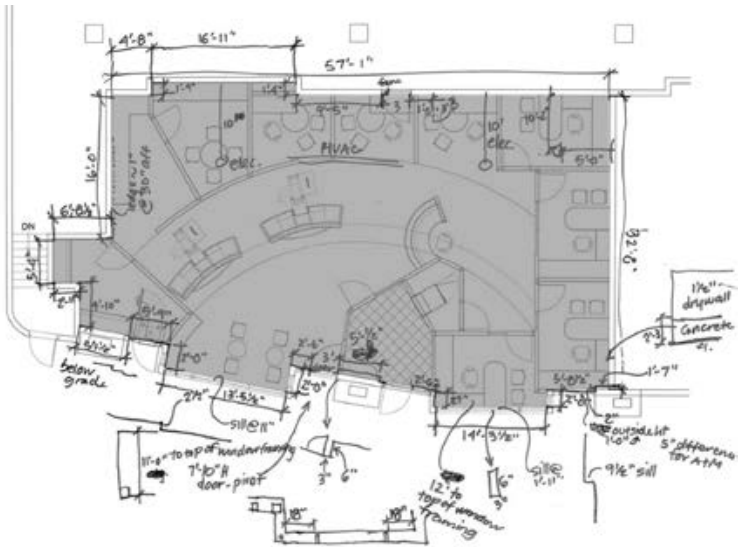
# ONE GEORGIA BANK

The client was seeking a flagship bank branch with a retail feel, to complement their corporate offices on the 26th floor above. With premium storefront space facing 14th Street, a focus was on making a visual impact for passing cars and pedestrians, to draw them into the branch.

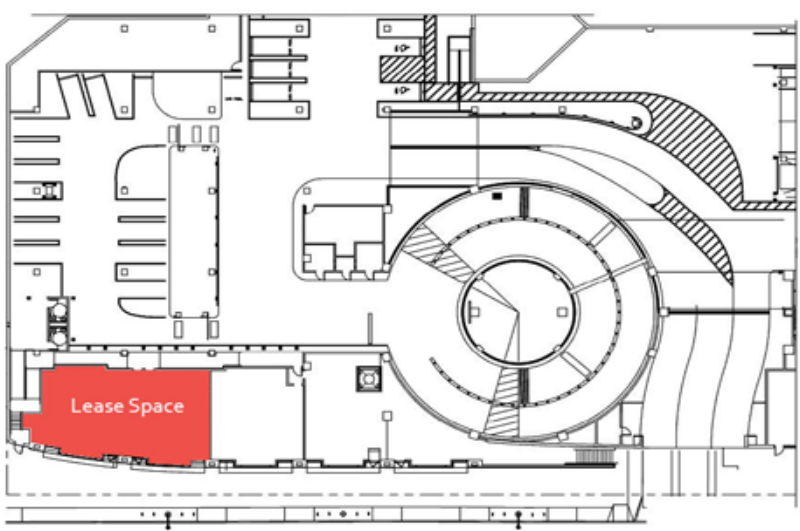
As lead designer, I managed the clients' expectations from project inception through completion of construction and Grand Opening.

One unique feature of the bank design is the open flow with teller pods. These units, equipped with cash recyclers, allow more personal service for customers than traditional teller stations. Customers can also enjoy gourmet coffee and tea while visiting a concierge station in the branch that will assist with restaurant reservations, tickets to concerts and more.

The new branch opened in May 2006.



Field Documentation



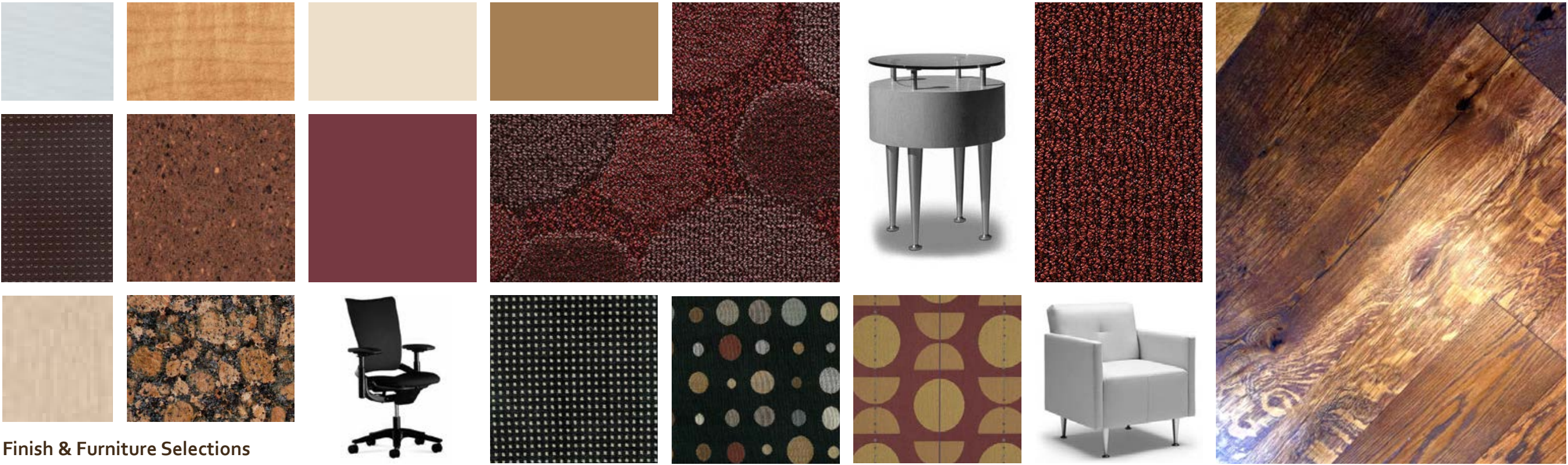
Site Plan



1180 Peachtree

## Wood Flooring

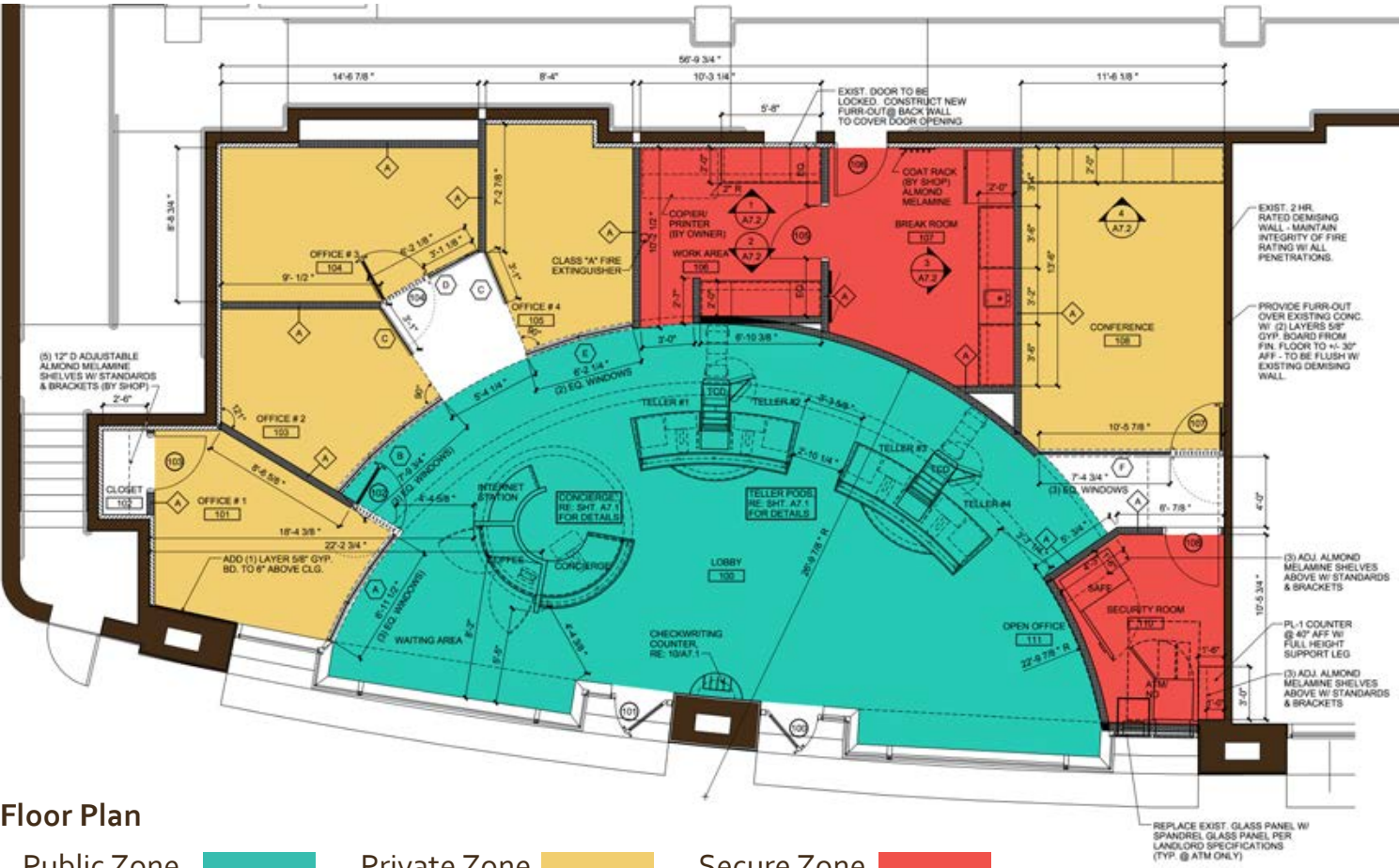
To showcase Georgia's history, we chose a rich antique wood floor salvaged from trees first cut down before the Revolutionary War and reclaimed from 19th-century barns throughout Georgia.



Finish & Furniture Selections

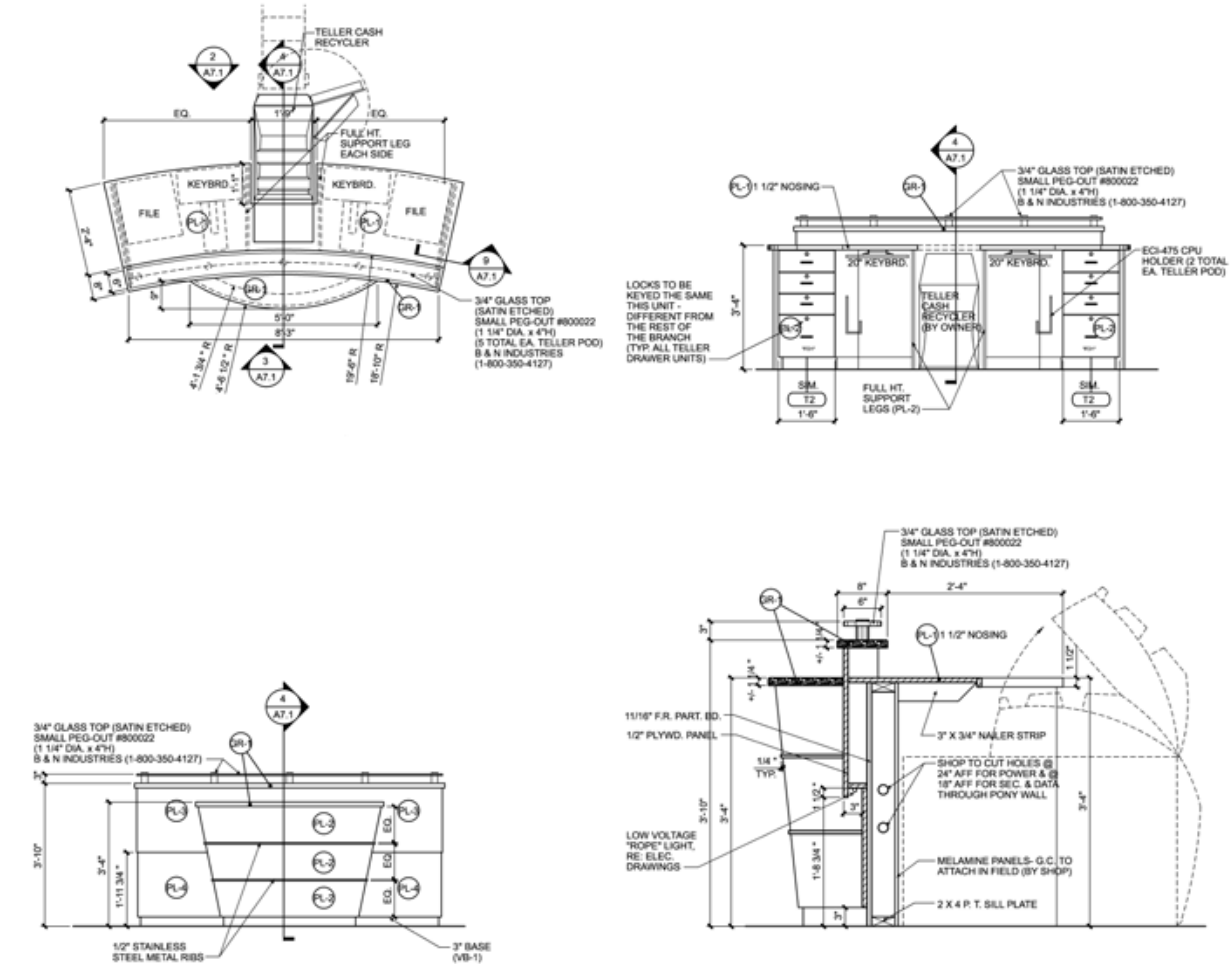


# ONE GEORGIA BANK



Floor Plan

Public Zone    Private Zone    Secure Zone



Millwork Details for Teller Pods



Photos of Completed Branch: Concierge Station, Waiting Area, Teller Pod, Private Office



# FIRST FEDERAL

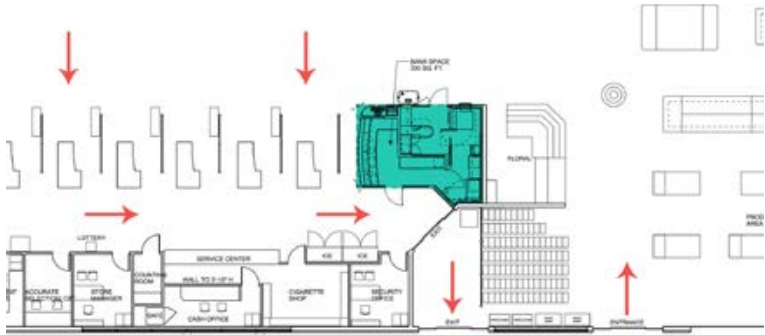
With more than twenty-five in-store banking locations, primarily in South Carolina, First Federal Savings & Loan came to our firm to design and build the first LEED-certified in-store branch in the nation, and their first branch in the Wilmington, North Carolina market.

This 330-square-foot branch is located inside a Lowe's Foods grocery store. The branch contains one office, two tellers and a security room. A combination ATM/night drop and internet kiosk are also available for customer convenience.

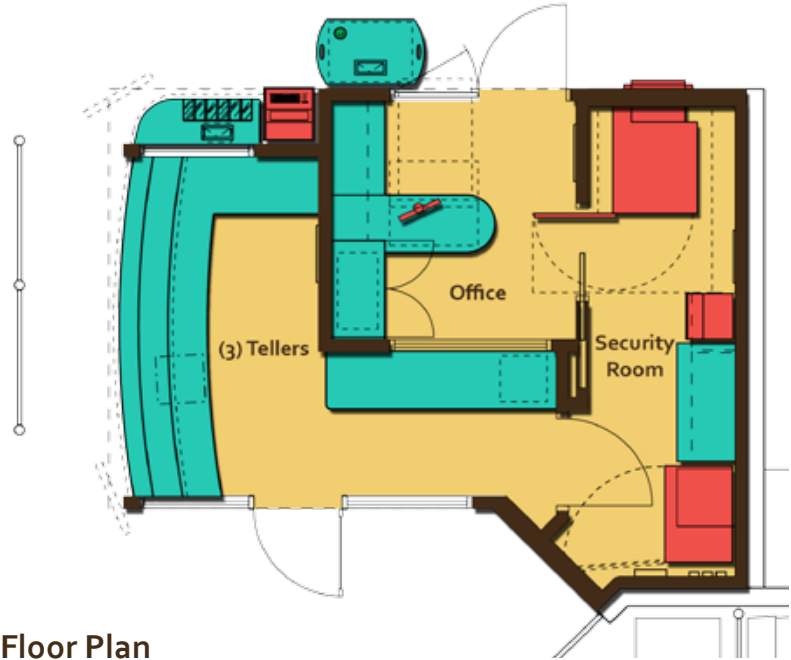
The branch is "freestanding" because only one side is against an existing wall. The new bulkhead had to be supported with structural steel. I coordinated the details with a local structural engineer.

We earned a Certified Rating under the LEED for Commercial Interiors rating system, Version 2.0.

The new branch opened in October 2008.



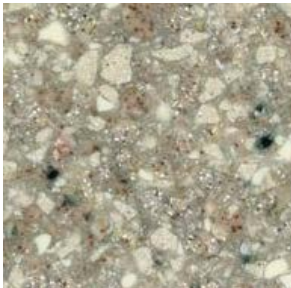
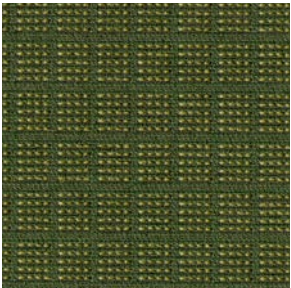
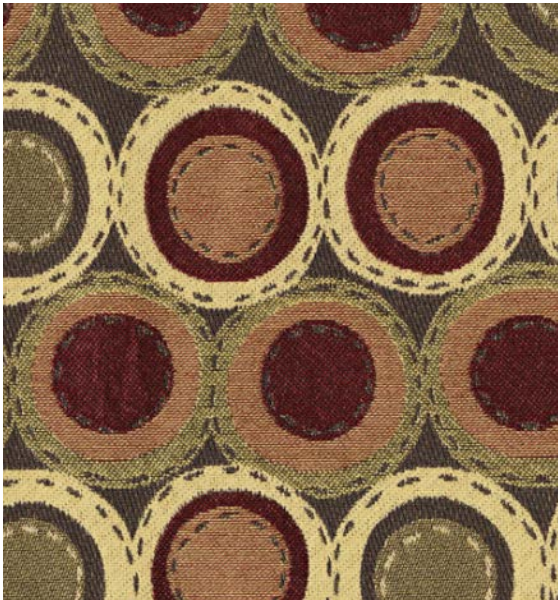
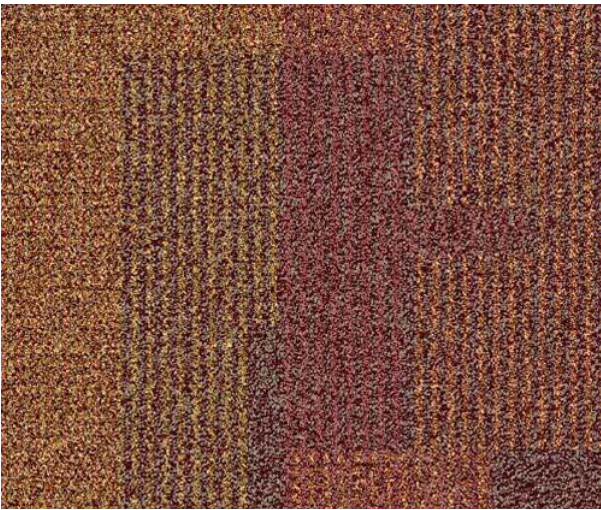
Store Area Plan



Floor Plan

## Finish Selections:

I chose materials that complemented the bank's corporate burgundy color and that would be durable for a busy in-store bank setting. Several of the selections helped us achieve LEED credits, including carpet that met NSF-140 Platinum, rapidly-renewable bamboo flooring, solid surface & fabrics containing recycled content, and low-VOC paints.





# FIRST FEDERAL



## SCORECARD

### LEED for Commercial Interiors Version 2.0

- Sustainable Sites: 2 out of 7
- Water Efficiency: 0 out of 2
- Energy & Atmosphere: 6 out of 14
- Materials & Resources: 6 out of 14
- Indoor Environmental Quality: 8 out of 17
- Innovation & Design Process: 3 out of 5
- TOTAL: 25 out of 57 (Certified Level)**



First Federal  
Wilmington, NC



### Sustainable Sites Credit 2: Development Density and Community Connectivity

- Achieved 1 point by showing a map of 10 basic services and a dense apartment complex within 1/2 mile of project.

### Materials & Resources Credit 5: Regional Materials

- Achieved 2 points by choosing steel, studs, doors, storefront and more from within a 500-mile radius, adding up to 20% of total material costs.



### Innovation & Design Credit 1.2: Green Housekeeping Plan

- Achieved 1 innovation point by creating a document explaining the benefits of "green cleaning" and the strategies and best practices to be used by branch employees or a cleaning service.



### Indoor Environmental Quality Credit 3.1: Construction IAQ Management, During Construction

- Achieved 1 point by developing and implementing an Indoor Air Quality (IAQ) Management Plan for the construction and pre-occupancy phases of the building.
- Utilized MERV 8 Air Filters to block ducts & diffusers during construction and installed them after construction.



Photos of Completed Branch: Teller Line, Internet Kiosk and Check Desk, Detail of Teller Line Front, Mobile Marketing Cart



# STARBUCKS COFFEE

Before beginning the design of this 1900-square-foot, two-story Starbucks location, I performed a complete site survey along with detailed field measurements.

The scope of work for the exterior included removing a parking space to add a new patio area and engineering a drive-through bump-out window. On the interior, we wanted to create a comfortable “third-place” for customers that was operationally functional for Starbucks partners. An important strategy was to break up the two-story walls with murals and artwork to make the seating areas more intimate.

Per Starbucks corporate direction, this new store was required to meet basic LEED certification. I was able to achieve 23 points by documenting local bus routes and services, meeting over 90% daylight areas, installing a high-efficiency HVAC system and achieving 5 innovation points.

The cafe opened in October 2012.



Survey Perspective View of Front  
Revit with Photoshop

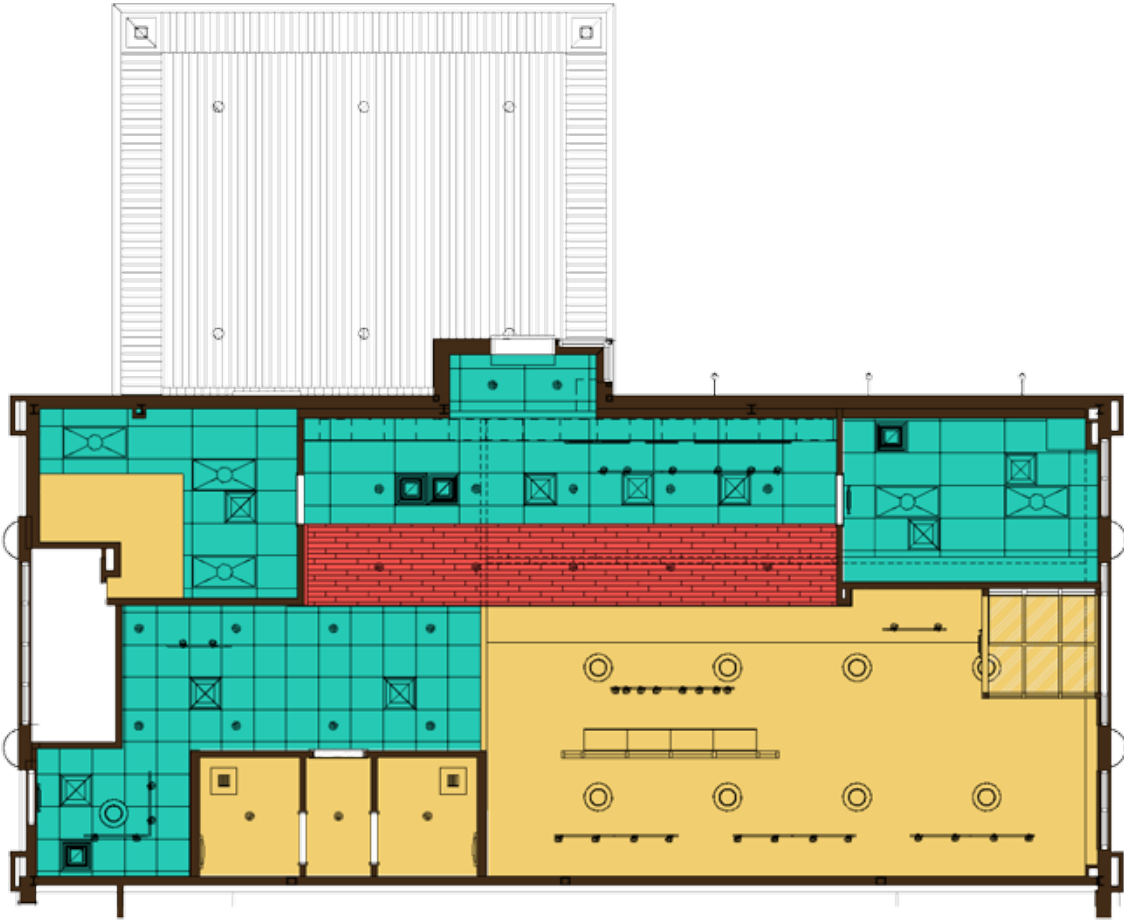


Survey Perspective View of Rear  
Revit with Photoshop



Floor Plan

Partner Area   Seating Area   Sales Area

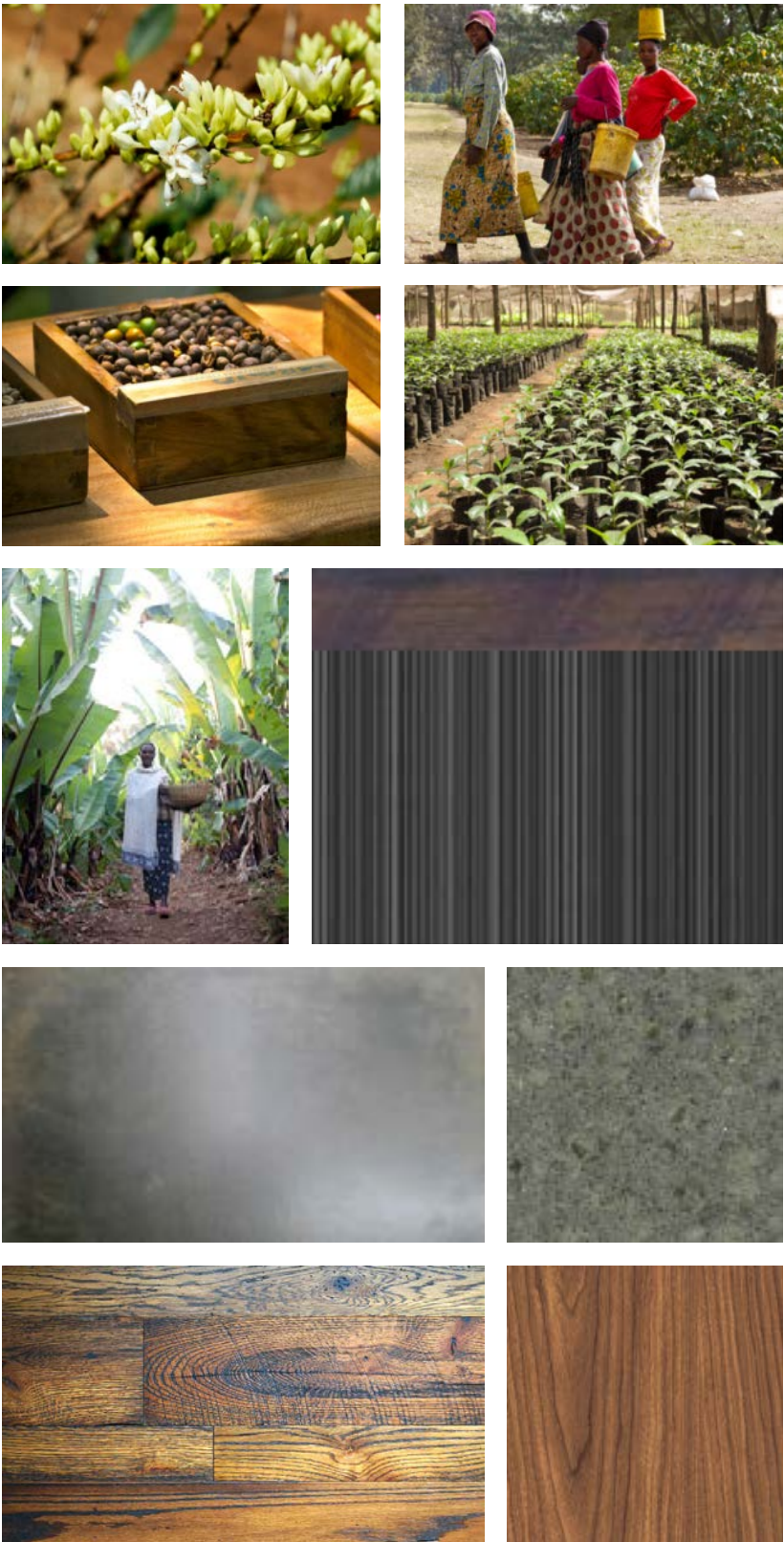


Reflected Ceiling Plan

A.C.T.   Gyp. Bd.   Wood Plank



# STARBUCKS COFFEE



Proposed Artwork & Finishes



Rendered View of Seating Area with Mural - Revit with Photoshop



Rendered View of Bar and Ordering Area - Revit with Photoshop



Photos of Completed Store



# JACKSON HEWITT

In the 2009 tax season, Jackson Hewitt kiosks were located in 1200 Walmart stores and competitor H &R Block was located in 1000 stores. In February 2009, Walmart selected Jackson Hewitt as Walmart's sole tax-preparation provider in their US stores.

In addition to the current locations, Jackson Hewitt gained the rights to place kiosks in stores formerly occupied by H &R Block, for a total of 2200 locations. Walmart required Jackson Hewitt to replace all existing tax prep kiosks with new kiosks to complement the new store color schemes. All new kiosks had to be implemented in their stores for the 2010 tax season.

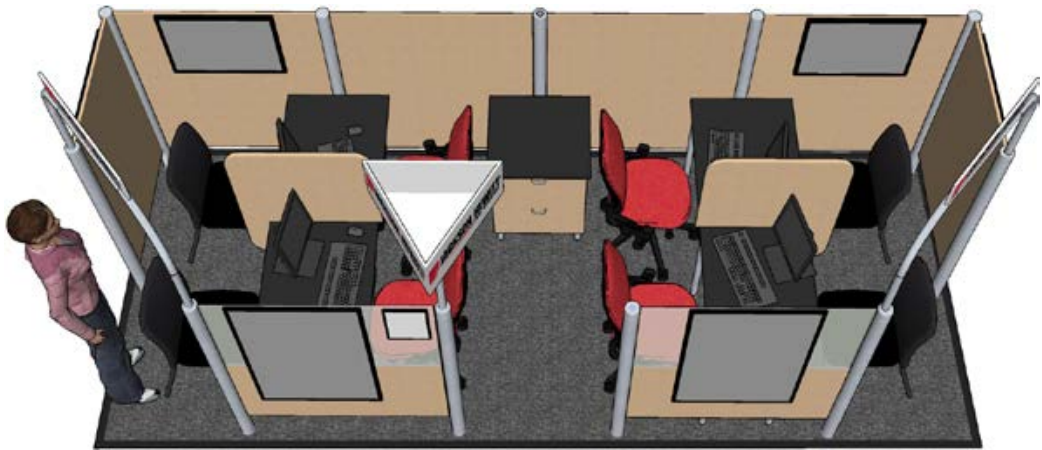
I created 3D schematic designs using SketchUp for approval by Walmart and Jackson Hewitt executives.



Demo Kiosk Photos: Single Station and Double Station



Single Station Isometric View  
SketchUp



Double Station Overhead View  
SketchUp



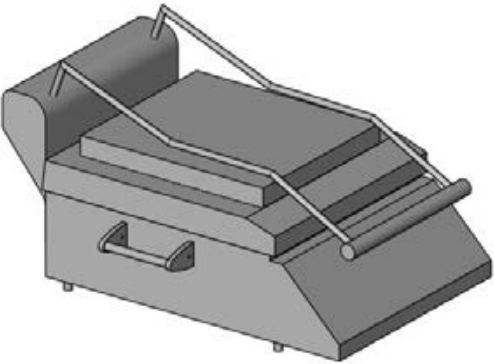
Double Station Isometric View  
SketchUp



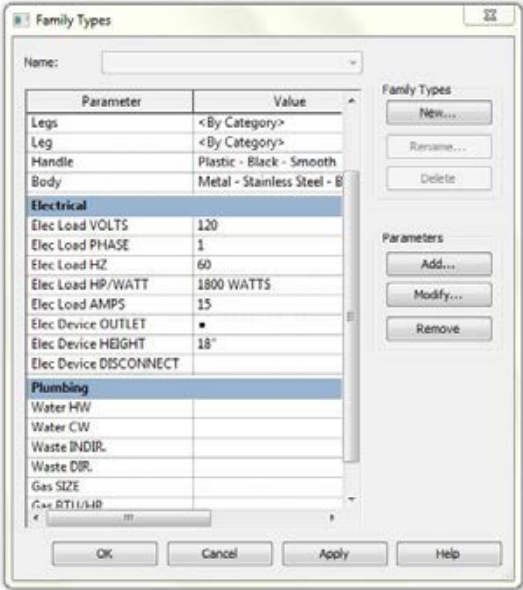
# MOE'S SOUTHWEST GRILL

As the preferred architect for Moe's locations, we maintained the prototype and generated construction documents for locations across the nation. In 2012, we began completing the drawings in Revit. I built equipment families using custom parameters that would automatically generate the equipment schedule.

For this Columbia, SC location, I created a rendering in Revit for the franchisee to visualize the finished product.



Tortilla Press  
Modeled in Revit



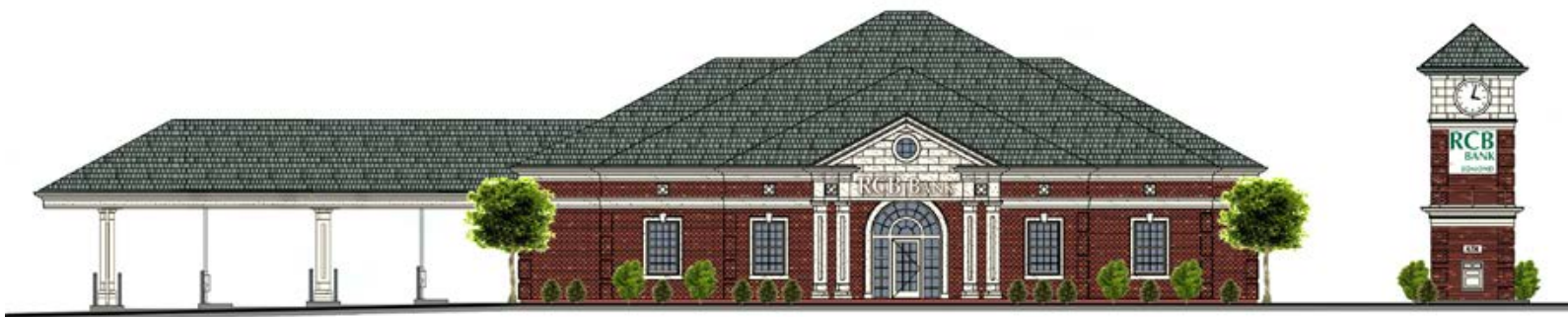
Seating and Ordering Bar  
Rendered in Revit



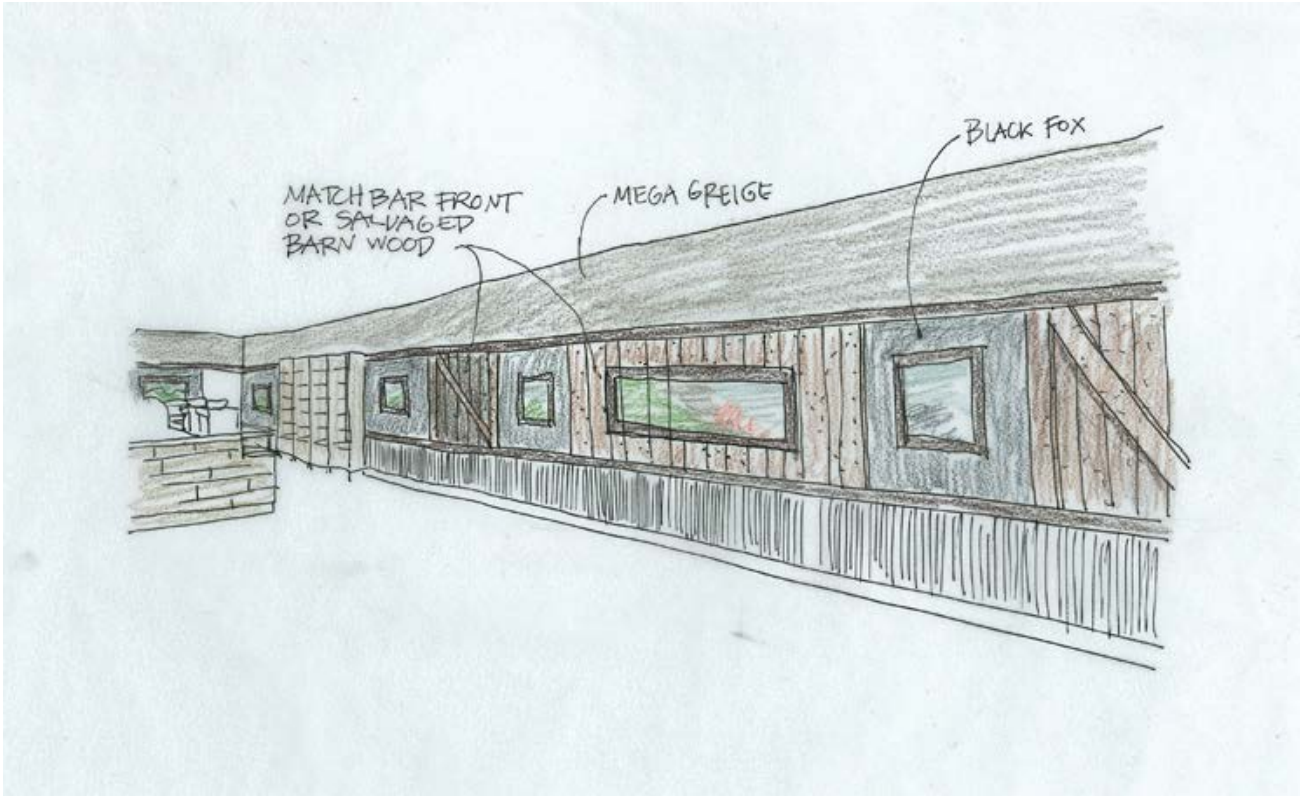
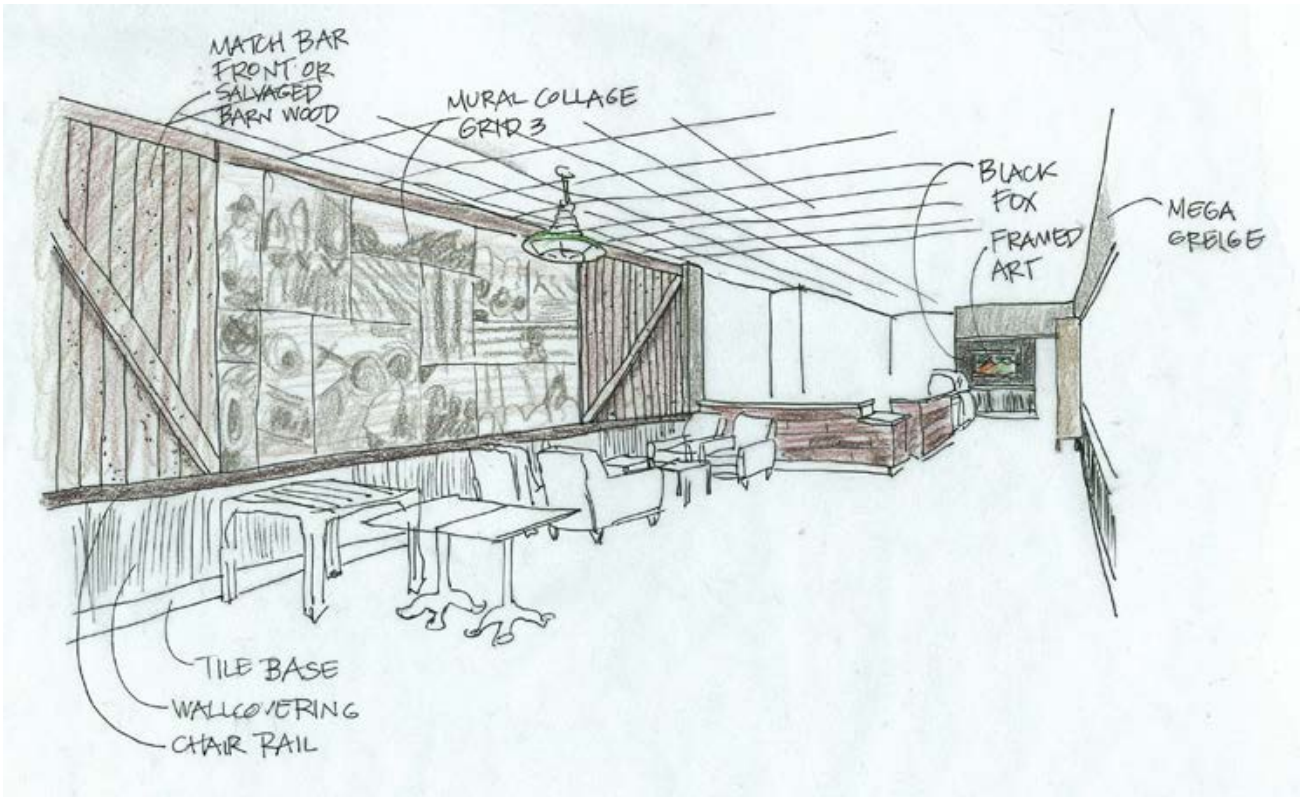
Completed Photos



RENDERINGS



Renderings for RCB Bank, Oklahoma  
Top: Microstation with Photoshop, Bottom: Revit with Photoshop



Sketches for Starbucks, Lancaster, PA  
Colored Pencils & Pen



# ARTWORK



After “Adam’s House” by Edward Hopper, 1928  
Watercolor



“Arkansas Blacks”  
Watercolor



Kitchen and Keeping Room  
Marker and Colored Pencils



“Memorial Continental Hall” in Washington, DC  
Gouache



Problems in Color Coursework  
Gouache

